

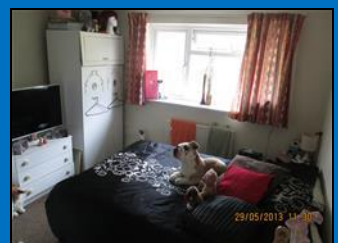


**£210,000**

**Fisher Close, Southgate, Crawley, RH10**

Platinum Estates are delighted to offer to the market this lovely 3-bedroom family home in the popular Southgate, Close to local amenities and schools. This property consists of a 24' Lounge/Diner with Feature Fireplace, 16' Beech Fitted Kitchen, 3 Excellent sized Bedrooms, White Family Bathroom Suite with Power Shower & Separate W/C, 53' Secluded Rear Garden. This property also benefits from D/G Windows Throughout & G/C/H Via Rads.

- **Lovely 3-bedroom family home**
- **24' Lounge/Diner with Feature Fireplace**
- **16' Beech Fitted Kitchen**
- **White Family Bathroom Suite**
- **53' Secluded Rear Garden**
- **D/G Windows Throughout & G/C/H via Rads**



### **Hallway**

Carpet Flooring, Leads to Stairs to First Floor, Kitchen & Lounge.

### **Kitchen 16x7**



Block Work Tops, Gas Hob with extractor fan & Electric Oven, D/G Window to front Aspect, 4 Power Points, Door leading to Lounge

### **Lounge 24'x11'**

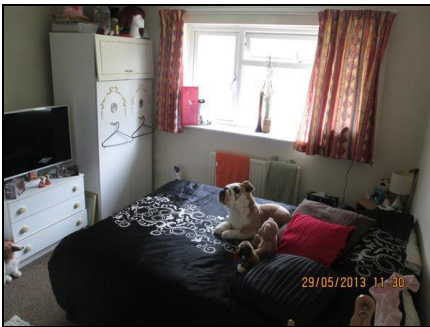


Carpet Flooring, Patio Doors to Garden, D/G Windows to Garden, Doors to Hall & Kitchen, Feature Fire Place, Rads.

### **Landing**

Carpet Flooring & landing leads to Bedrooms & Bathroom.

### **First Bedroom 12'x10'**



Carpet Flooring, Double Glazed Window to Rear, Rad.

### **Second Bedroom 13'x8'**

Carpet flooring, Airing Cupboard, Double Glazed window to rear, Rad

The Property Misdescription's ACT 1991. While we endeavour to make our details accurate, we have not tested any equipment or appliance and therefore we can not verify the particular herein. Room sizes are approximate and should be independently verified. We have not had sight of legal documents and buyers are advised to obtain their own reports from Solicitors and Surveyors before finalizing an offer to buy. Journeys should not be undertaken to view a property without making an appointment to view before hand.

### Thrid Bedroom 9x7

Rad, Carpet Flooring, Double Glazed Window to Front & Storage.

### Family Bathroom 6x5

Lino Flooring, Bath, Power Shower, Double Glazed Frosted Window to Front

### Low Level W/C

Lino Flooring, Double Glazed Frosted Window to Front.

### Rear Garden 53' x 31'

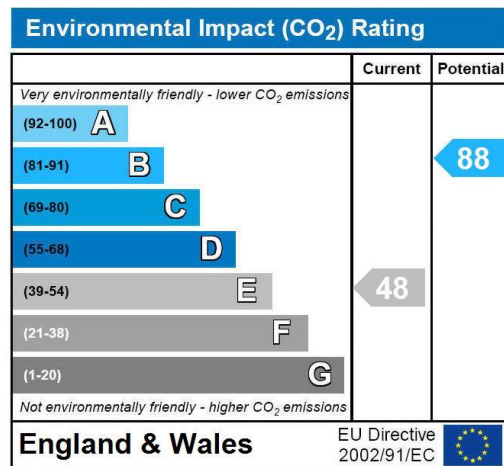
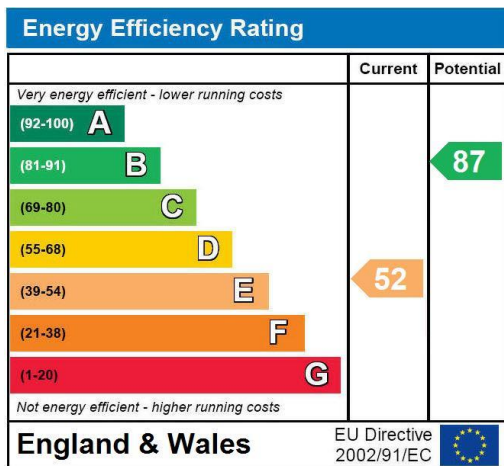
Side Gate Access, Patio, Mainly Laid to Lawn, Raised Grass, Shed to Side

### Heating

Double Glazed Windows & G/C/H Via Rads,

Property Ref: ABC1000584

### Energy Performance Certificates

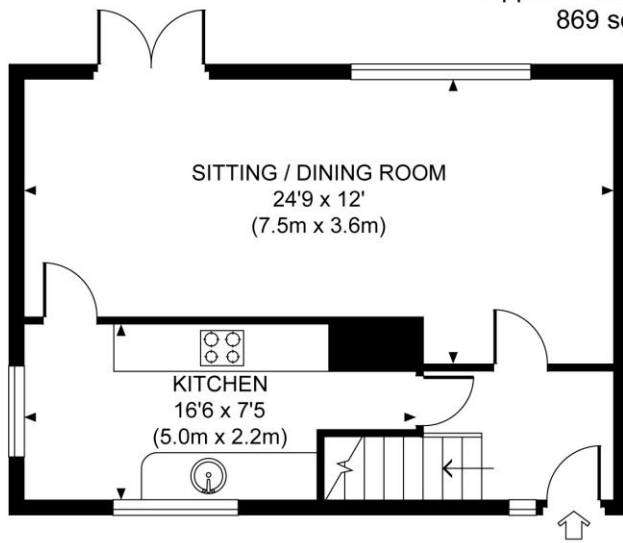


### Floor Plan

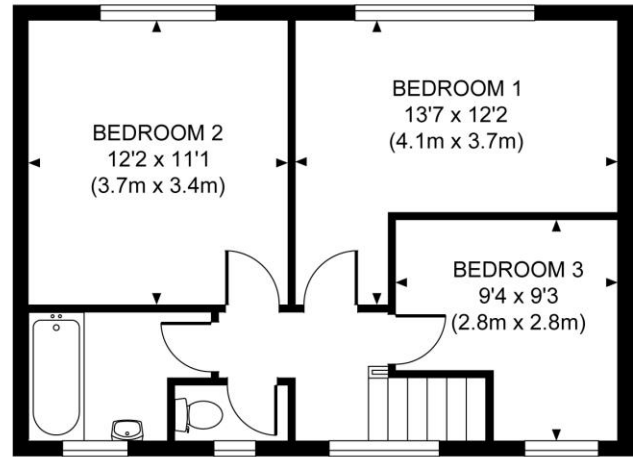
The Property Misdescription's ACT 1991. While we endeavour to make our details accurate, we have not tested any equipment or appliance and therefore we can not verify the particular herein. Room sizes are approximate and should be independently verified. We have not had sight of legal documents and buyers are advised to obtain their own reports from Solicitors and Surveyors before finalizing an offer to buy. Journeys should not be undertaken to view a property without making an appointment to view before hand.



Approximate Gross Internal Area  
869 sq ft / 80.8 sq m



GROUND FLOOR



FIRST FLOOR

The Property Misdescription's ACT 1991. While we endeavour to make our details accurate, we have not tested any equipment or appliance and therefore we can not verify the particular herein. Room sizes are approximate and should be independently verified. We have not had sight of legal documents and buyers are advised to obtain their own reports from Solicitors and Surveyors before finalizing an offer to buy. Journeys should not be undertaken to view a property without making an appointment to view before hand.