



**£334,950**

**North Road, Three Bridges, Crawley, RH10**

Platinum Estates are pleased to offer to the market this SPACIOUS DETACHED BUNGALOW. The property in brief comprises of 3 LARGE DOUBLE BEDROOMS one with ensuite shower room. Complete with FAMILY BATHROOM with bath and shower over, low level W/C and wash basin. LARGE SPACIOUS lounge with separate dining room leading through to LIGHT L-shaped kitchen with built in appliances. The property also benefits from a utility room with space and plumbing for free standing fridge/freezer, washing machine and tumble dryer, HUGE REAR GARDEN mainly laid to lawn with patio. EXCELLENT LOCATION, close to town centre, leisure park, cinema, bowling, gyms, Tesco superstore and ALL AMENITIES.

- **HUGE REAR GARDEN**
- **3 DOUBLE BEDROOM BUNGALOW**
- **LOUNGE & SEPARATE DINING ROOM**
- **FAMILY BATHROOM AND ENSUITE SHOWER ROOM!**
- **FANTASTIC ACCESS TO TOWN & AMENITIES!!**



### **Entrance Porch**

Leading to main hallway

### **Hallway**

Laminate flooring, gas central heating via radiator. Leading to bedrooms 1 & 2 and lounge.

### **Lounge 15'3 x 12'4**

Light and Airy. Carpeted. Gas central heating via radiator. Double glazed window to side. Leading to dining room, Hallway and Bedroom.



### **Dining Room 12'0 x 10'5**

Separate room. Spacious with feature wall. Large double glazed window to side. Gas central heating via radiator. Leading to Utility Room, Kitchen and Lounge.



### **Kitchen 10'6 x 7'9**

L-Shaped light kitchen with a range of wall and base units. Lino flooring. Large window to Rear. Built in oven, gas hob and extractor. 1 Bowl stainless steel sink with drainer. Space and Plumbing for Dishwasher. Leading to Dining Room & Patio.



### **Utility Room 6'11 x 5'11**

Space for free standing fridge/freezer, Washing Machine and Tumble Dryer. Lino flooring. Leading to Bathroom, Outside and Dining Room.

The Property Misdescription's ACT 1991. While we endeavour to make our details accurate, we have not tested any equipment or appliance and therefore we can not verify the particular herein. Room sizes are approximate and should be independently verified. We have not had sight of legal documents and buyers are advised to obtain their own reports from Solicitors and Surveyors before finalizing an offer to buy. Journeys should not be undertaken to view a property without making an appointment to view before hand.



### **First Bedroom 11'6 x 10'11**

LARGE MASTER BEDROOM, featuring built in Wardrobe and Large window to front. Carpeted with power points and Television point, Gas central heating via radiator.



### **Second Bedroom 11'5 x 10'11**

LARGE SECOND BEDROOM, featuring built in Wardrobe and Large window to front. Carpeted with power points and Television point, Gas central heating via radiator.

### **Third Bedroom 12'3 x 11'4**

LARGE BEDROOM currently divided for more space. Carpeted. GCH via radiator. Leading to ensuite shower room and lounge. Two windows to side. Power points.



### **En-suite Shower Room**

Cubical shower and low level W/C and Wash Basin. Lino Flooring. Frosted window to side. GCH via radiator.

The Property Misdescription's ACT 1991. While we endeavour to make our details accurate, we have not tested any equipment or appliance and therefore we can not verify the particular herein. Room sizes are approximate and should be independently verified. We have not had sight of legal documents and buyers are advised to obtain their own reports from Solicitors and Surveyors before finalizing an offer to buy. Journeys should not be undertaken to view a property without making an appointment to view before hand.



### Family Bathroom 7'9 x 6'3

Featuring low level W/C, wash basin and bath with shower over. Carpeted with GCH via radiator. Frosted window to rear.

### Front Garden

Split off road parking and lawn. Space for 1/2 cars.

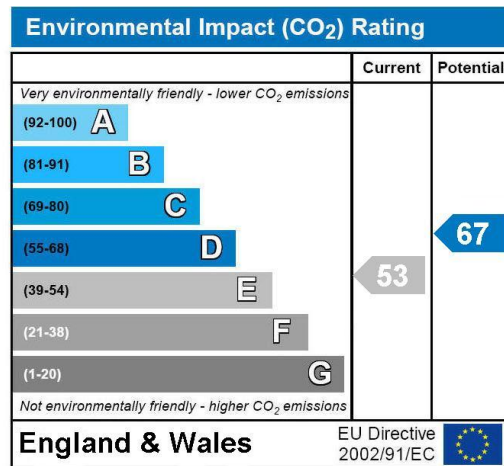
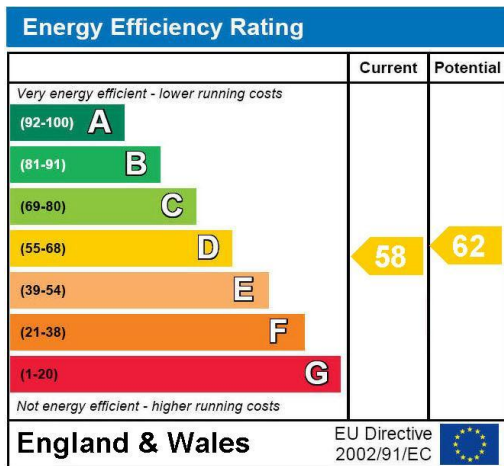
### Rear Garden

HUGE Rear garden mainly laid to lawn with patio paving. Trees at rear.



Property Ref: ABC100334

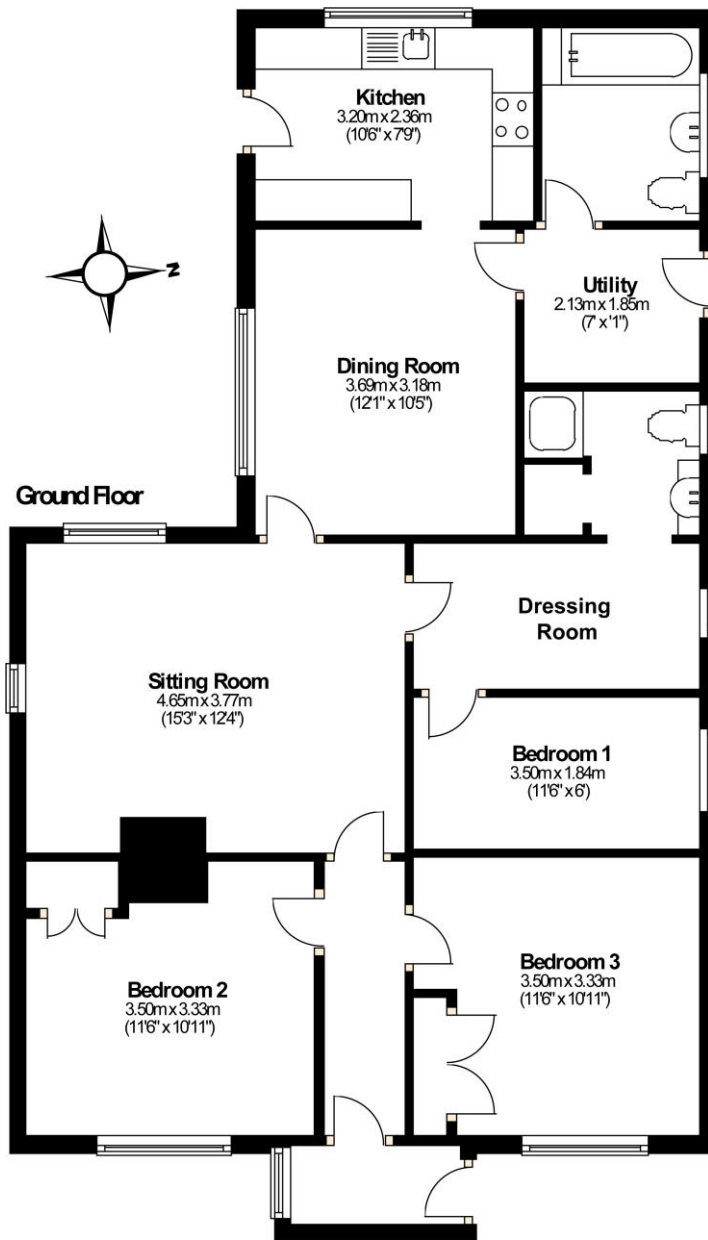
### Energy Performance Certificates



The Property Misdescription's ACT 1991. While we endeavour to make our details accurate, we have not tested any equipment or appliance and therefore we can not verify the particular herein. Room sizes are approximate and should be independently verified. We have not had sight of legal documents and buyers are advised to obtain their own reports from Solicitors and Surveyors before finalizing an offer to buy. Journeys should not be undertaken to view a property without making an appointment to view before hand.

## Floor Plan

Approximate Gross Internal Area  
90 sq.m (971 sq.ft)



The Property Misdescription's ACT 1991. While we endeavour to make our details accurate, we have not tested any equipment or appliance and therefore we can not verify the particular herein. Room sizes are approximate and should be independently verified. We have not had sight of legal documents and buyers are advised to obtain their own reports from Solicitors and Surveyors before finalizing an offer to buy. Journeys should not be undertaken to view a property without making an appointment to view before hand.